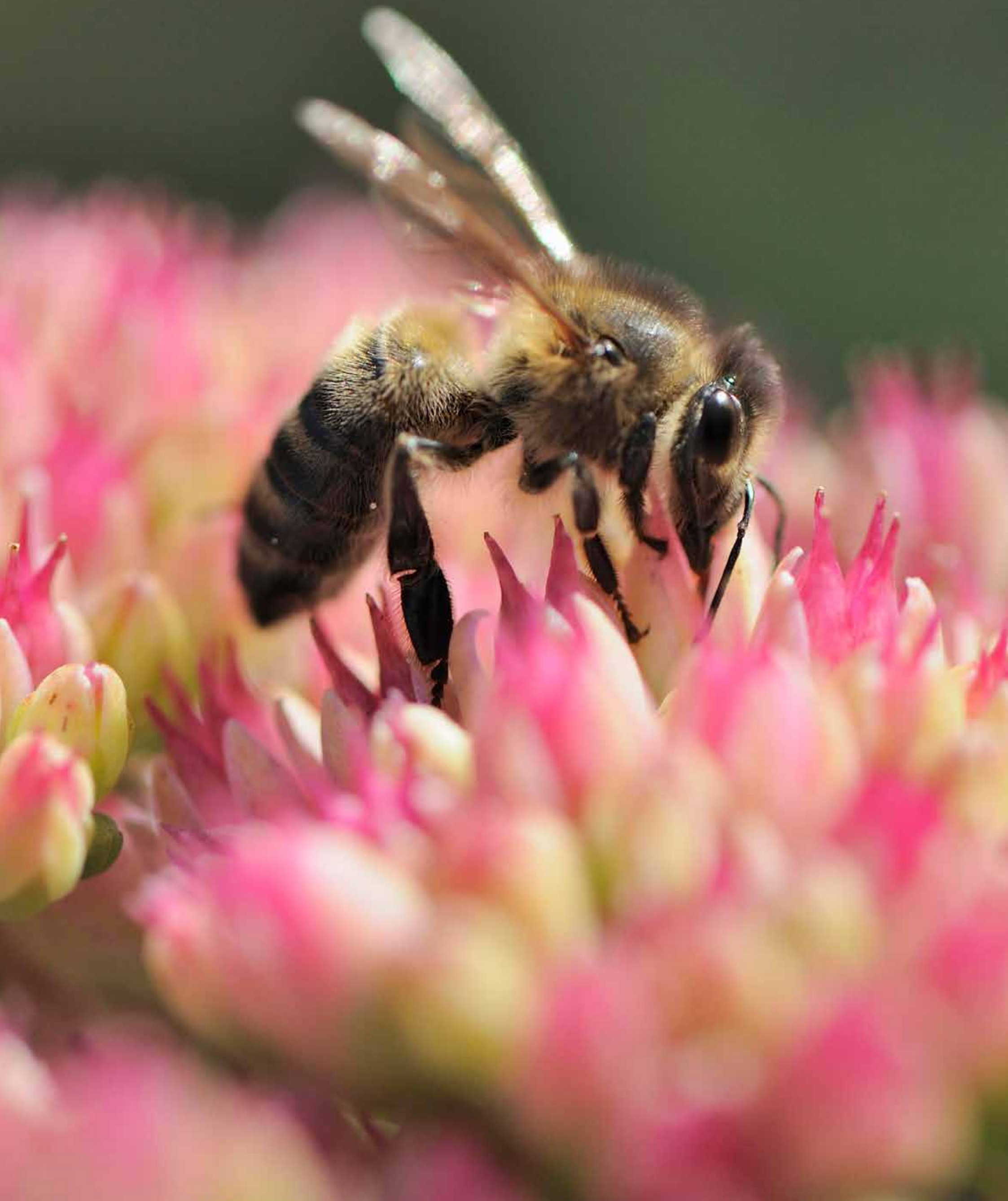




NatureScot

Scotland's Nature Agency
Buidheann Nàdair na h-Alba



Surviving winter

Honey bee colonies can live for year after year in the same hive. They store lots of honey so that the whole colony can survive the winter. This is different to bumblebees where only the queen survives by hibernating through winter.



Queen bee

The queen honey bee is bigger than any other bee in her hive. The queen's daughters are known as worker bees.



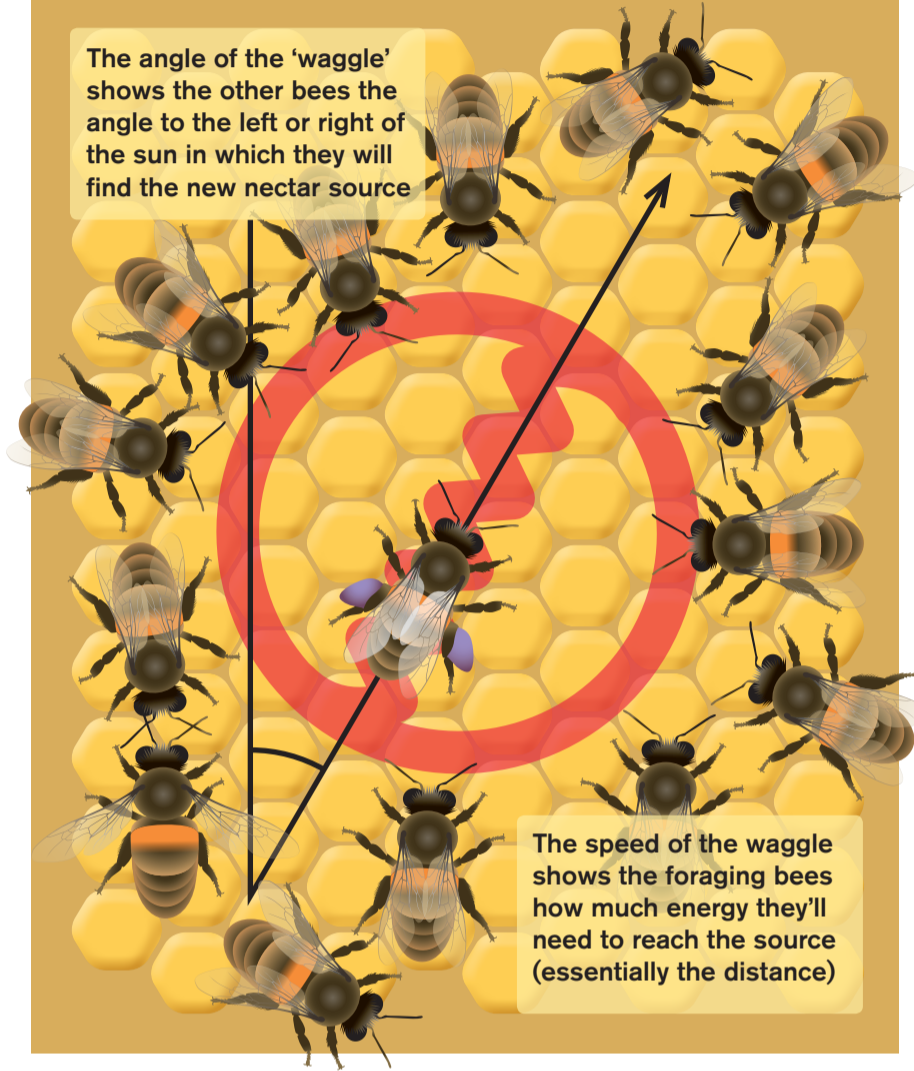
Flowery solution

The biggest single thing we can do to help bees is provide them with flowers to feed on. You don't need a garden to do this. Plants in a window box or tub can attract and help bees.

What is the waggle-dance?

Honey bees tell their sisters about flowers they have found. They do this by performing a waggle-dance which lets the other bees know where and how far to go to find the flowers (and the nectar and pollen) they have just left.

The angle of the 'waggle' shows the other bees the angle to the left or right of the sun in which they will find the new nectar source



The speed of the waggle shows the foraging bees how much energy they'll need to reach the source (essentially the distance)

Pollination

Bees are really important for the food we eat. Without them our apples, strawberries, pears, raspberries, beans and blackberries would be in trouble.



Swarming

When a honey bee colony becomes too big it will swarm. When this happens several thousand bees leave the hive with the old queen and form a new colony.



Wordsearch

Can you find these honey bee words in the grid? Words can read up and down, left to right, right to left or diagonally.

See how many you can find.

- SWARM
- POLLENBASKET
- WING
- WAGGLEDANCE
- NECTAR
- FLOWER
- PESTICIDE
- HIVE
- HONEY
- WAX

X	Q	W	A	C	G	S	D	O	Q	A	G	N	I	W
A	D	E	N	P	R	B	Z	J	Y	W	E	B	G	Q
W	A	G	G	L	E	D	A	N	C	E	D	W	C	J
R	A	Y	P	O	F	C	W	R	F	L	S	R	V	R
A	W	Q	B	E	D	P	E	S	T	I	C	I	D	E
B	F	V	N	L	R	Y	P	A	D	W	C	Y	T	B
Q	Z	M	J	Z	N	P	F	G	X	B	O	B	R	E
P	O	L	L	E	N	B	A	S	K	E	T	W	E	W
R	P	B	Y	X	E	O	B	P	F	V	Y	A	W	F
A	B	N	W	D	C	J	R	F	V	I	L	Z	O	R
C	P	Q	W	E	T	N	D	D	M	H	Q	D	L	R
R	G	J	C	T	A	Q	W	Z	N	F	A	Y	F	B
D	F	D	W	E	R	A	C	B	S	W	C	M	G	C
S	W	A	R	M	R	L	R	W	G	V	R	Q	A	E
E	F	A	B	R	W	C	Q	F	J	H	O	N	E	Y

Part of our history



Our association with honey bees stretches back thousands of years. The Egyptians were beekeepers, and bees appear in their hieroglyphics. Wax and honey are two valuable products that we continue to harvest from honey bees.

Laugh out loud

What did the bee say to the naughty bee?

Bee-hive yourself!



NatureScot

Scotland's Nature Agency
Buidheann Nàdair na h-Alba

Honey bees